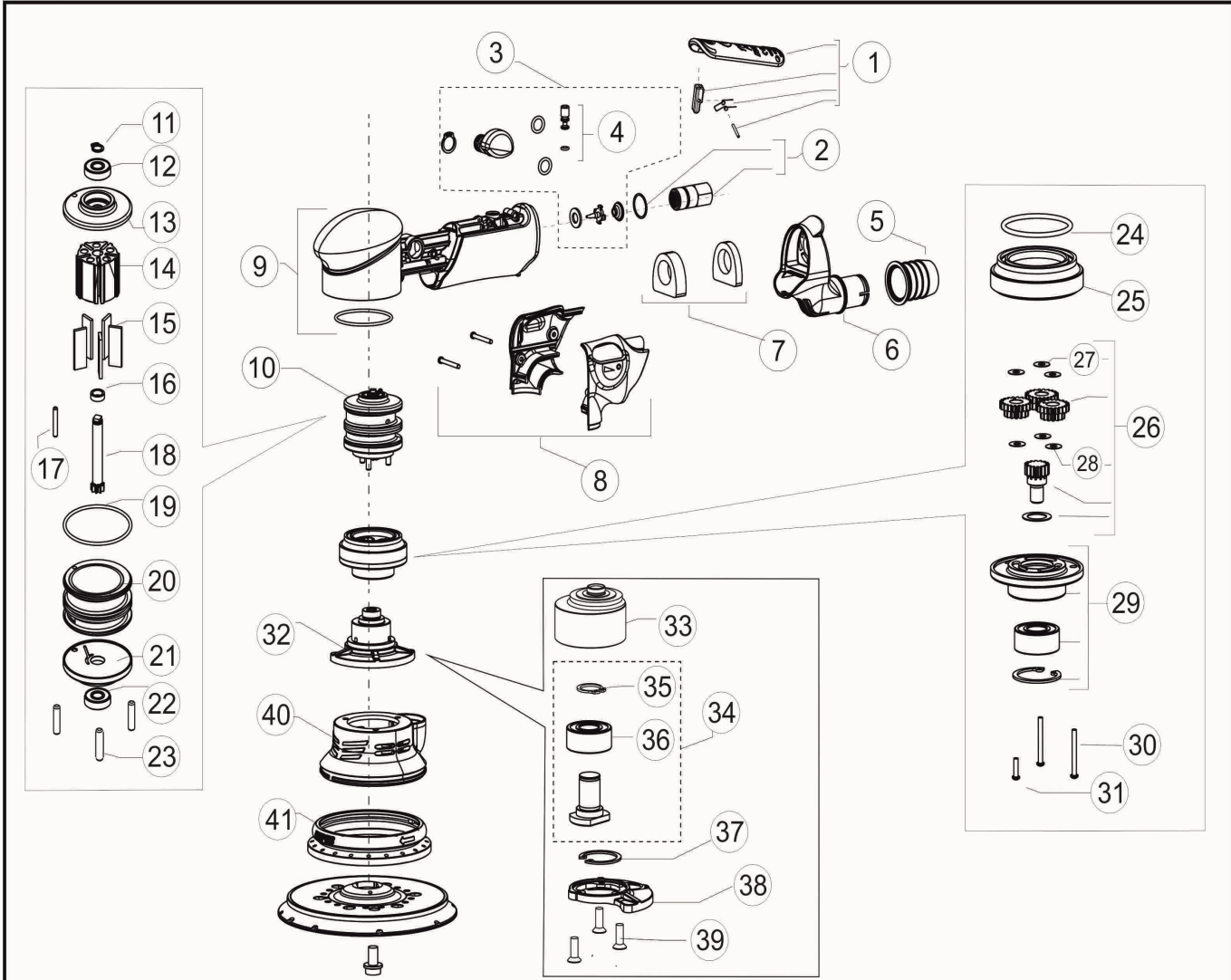


02/2020



# RUPES

LEVIGATRICE TRIPLE ACTION  
 TRIPLE ACTION SANDER

TA6A

ID	ITEM	DESCRIPTION
001	38.304/C	COMPLETE LEVER TA6A
002	43.404/C	RACCORDO ALIMENTAZIONE ALLUMINIO
003	30.304/C	COMPLETE VALVE GROUP TA6A
004	382.197/C	PIN VALVE LHR75
005	663.033	FILLER CONNECTOR
006	19.404	CORPO TERMINALE DI SCARICO
007	44.404/C	COPPIA COVER TA6
008	44.404/C	COPPIA COVER
008	44.404/C	COPPIA COVER
009	31.404/C	MOTOR HOUSING TA6
010	10.404/C	RH112A COMPLETE POWER UNIT
011	9.148	SEEGER FOR SHAFT 7mm
012	9.191/10	BEARING NSK 607 DDMC3E J NS7 (HOLE D.7-19-6)
015	18.344/10	Set 10 vanes TA6
017	9.4087	PLUG UNI 8734 - A3x22
018	51.404/C	ALBERO MOTORE TA6
019	9.2031	O-RING 2x46
022	9.191/10	BEARING NSK 607 DDMC3E J NS7 (HOLE D.7-19-6)
023	9.4088	SPINA 5x20
024	9.2033	O-Ring 44x2 NBR70
025	32.404	SCATOLA INGRANAGGI
026	52.404/C	TRIPLE ACTION GEAR SET
027	9.1844/50	50pz RONDELLA d6 D12 sp.0,3
028	9.1844/50	50pz RONDELLA d6 D12 sp.0,3
029	551.404/C	GEAR BOX LOWER HEAD SET
030	9.761	VITE PER PLASTICA UNI 10228-H-3,5x35 zincata nera
031	9.760	VITE X PLASTICA UNI 9709-Z-TF 4x30
032	58.404/C	MAZZA TA6
032	58.404/C	MAZZA TA6
033	58.404	MAZZA Orb. 6
034	56.364N/C	COMPLETE RAM PIN GROUP
035	9.102	SEEGER d 12 TIPO E DIN 471 CR3 PHOSPHATE
036	9.189/10	BEARING 3001 12-28-12
037	9.5017	SEEGER RING
039	9.609	SCREW M4 x 8 T.S.P. BURNISHED
040	33.404/C	COPPIA FLANGIE COPRI MAZZA
041	65.404/C	RUBBER SHROUD TA6