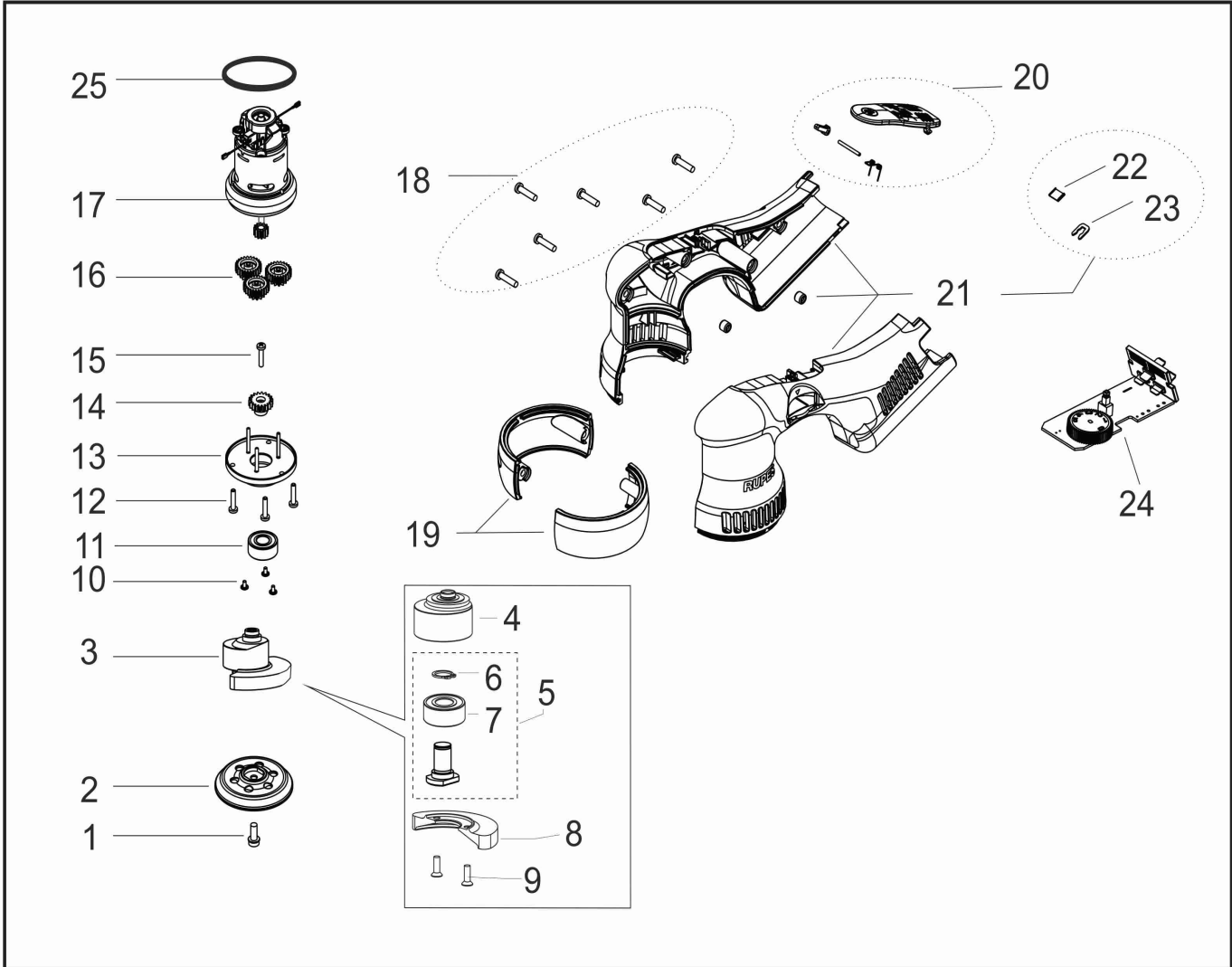


03/2023



RUPES

MINI LUCIDATRICE IBRID
MINI IBRID POLISHER

HLR75

| ID | ITEM | DESCRIPTION |
|-----|-----------|--|
| 001 | 9.820 | SCREW M6 x 16 UNI 4762 TC RECESS HEXAGONAL |
| 002 | 990.007 | Ø 75mm PAD VELCRO M6 FOR LHR75 |
| 003 | 58.430/C | ECCENTRIC ASSEMBLY HLR75 |
| 004 | 58.430 | MAZZA ORB 12 - DOPPIA CORONA |
| 005 | 56.430/C | THREADED PIN SET M6 |
| 006 | 9.102 | SEEGER d 12 TIPO E DIN 471 CR3 PHOSPHATE |
| 007 | 9.189/10 | BEARING 3001 12-28-12 |
| 008 | 57.430/C | CONTRAPPESO ORB 12 - PLATORELLO 75 |
| 009 | 9.609 | SCREW M4 x 8 T.S.P. BURNISHED |
| 010 | 9.832 | SCREW M3 x 6 TC + FL BURNISHED |
| 011 | 9.430/10 | CUSCINETTO 3001 ZZTN9 C7/15 U2 L21 |
| 012 | 9.618 | SCREW M4 x 20 T.C.C. 8G BURNISHED |
| 013 | 321.430/C | LOWER GEAR HOUSING HLR75 |
| 014 | 53.430/C | 1253 Solare 2 Z 18 D 1-3 |
| 015 | 9.618 | SCREW M4 x 20 T.C.C. 8G BURNISHED |
| 016 | 521.430/C | GEAR SET HLR75 |
| 017 | 3.430/C | COMPLETE MOTOR 18v HLR75 WITH PINION |
| 018 | 9.734 | SCREW X PLASTIC TC+PZ40x16SP |
| 019 | 65.430/C | COPPIA PROTEZIONE CONTRAPPESO |
| 020 | 38.430/C | TROTTLE LEVER HLR75 |
| 021 | 31.430/C | COMPLETE MOTOR HOUSING HLR75 |
| 022 | 751.436/C | GRAFFETTA DI BLOCCO LE71 iBrid 20PZ |
| 023 | 751.390/C | GRAFFA CHIUSURA CORPO MOTORE 20PZ |
| 024 | 400.430/C | ELECTRONIC MODULE HLR75 |
| 025 | 9.495/10 | O-RING 153 (49,21x3,53) NBR70 |