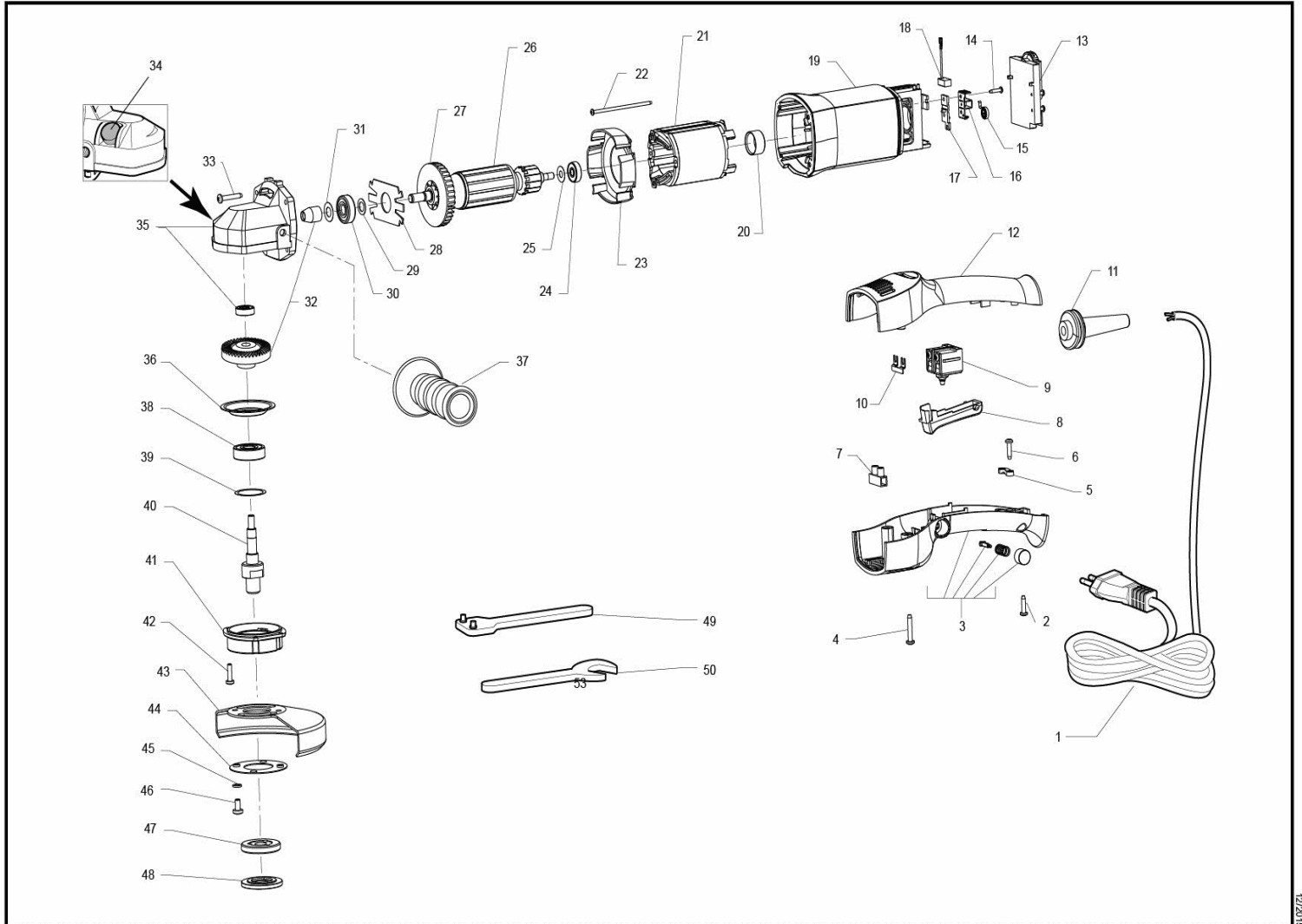


SMERIGLIATRICI MINIANGOLARI MINI-ANGULAR GRINDERS

GL080
GL080E



ID	ITEM	DESCRIPTION
001	9C2X1,5V003FOR	CABLE 2X1,5 (without plug) mt.3,50 with fork
002	9.660	SCREW 3,9x16 (7x5/8") T.C.C.
003	44.286/C	COMPLETE LOWER HANDLE (blocco a/c)
004	9.679	SCREW 4,2x25 (8x1") T.C.C.
005	442.55	CABLE CLAMP
006	9.660	SCREW 3,9x16 (7x5/8") T.C.C.
007	9.1583	CLAMP 4mm (12pcs)
008	38.286	SWITCH BUTTON (clamp open/close)
009	45.286	SWITCH 8(8) 250V 5E4 + CONDENSER
010	451.286	PLATE FOR SWITCH
011	42.290	CABLE SLEEVE SS31TE
012	441.286	UPPER HANDEL
014	9.551	SCREW 2,9x13 (4x1/2") T.C.C.
015	461.105	SPRING BRUSH HOLDER BA21 BURNISHED
016	46.105	BRUSH HOLDER BA215-LH18ENS
017	462.105	BRUSH HOLDER PLATE
018	471.105/10	10 BRUSHES BLISTER BA215 FOR LOW VOLTAGE
019	31.284	MOTOR BODY
020	268.105	BEARING CAP
021	2.286/048	STATOR (V. 48)
021	2.286/072	STATOR (V. 72)
021	2.286/110	STATOR (V.110)
022	9.787	SCREW 2,9x70 T.C.C.
023	73.284	AIR BULKHEAD
024	9.14/10	BEARING 626ZZ 1MC3EJNS75Q
025	9.318	STEEL WASHER d15 x 6,1 s 0,15
026	1.286/048	ROTOR (V. 48)
026	1.286/072	ROTOR (V. 72)
026	1.286/110	ROTOR (V.110)
027	15.105	FAN 36 BLADES
028	351.105	MOTOR BODY LITTLE COVER
029	9.298	STEEL WASHER d15 x 9,1 s 0,5
030	9.187/10	BEARING 629 2BRS R66 FA227
031	9.299	STEEL WASHER d18 x 9,1 s 0,15
032	50.106	GEAR SET
033	9.679	SCREW 4,2x25 (8x1") T.C.C.
035	32.205/C/21	GEAR BOX WITH BUTTON
036	35.105	FLANGE PLATE BA21-SL41
037	811.13	HANDLE
038	9.99/10	BEARING NSK 6201 DDUUM D EA3S6
039	9.314	STEEL WASHER d31,9 x 26 s 0,1
040	51.105	SPINDLE SHAFT
041	33.105	FLANGE
042	9.637	SCREW M4 x 16 T.C.C. 8G BURNISHED
043	82.114	GUARD
044	821.105	LOCK DISC FOR PROTECTION GUARD
045	9.331	TOOTHED WASHER
046	9.566	SCREW M5 x 10 T.C.C. BURNISHED 8.8
047	935.91	SUPPORT WHEEL NUT
048	934.91	WHEEL WRENCH NUT
049	83.91	SPANNER
050	83.13	SPANNER mm 17