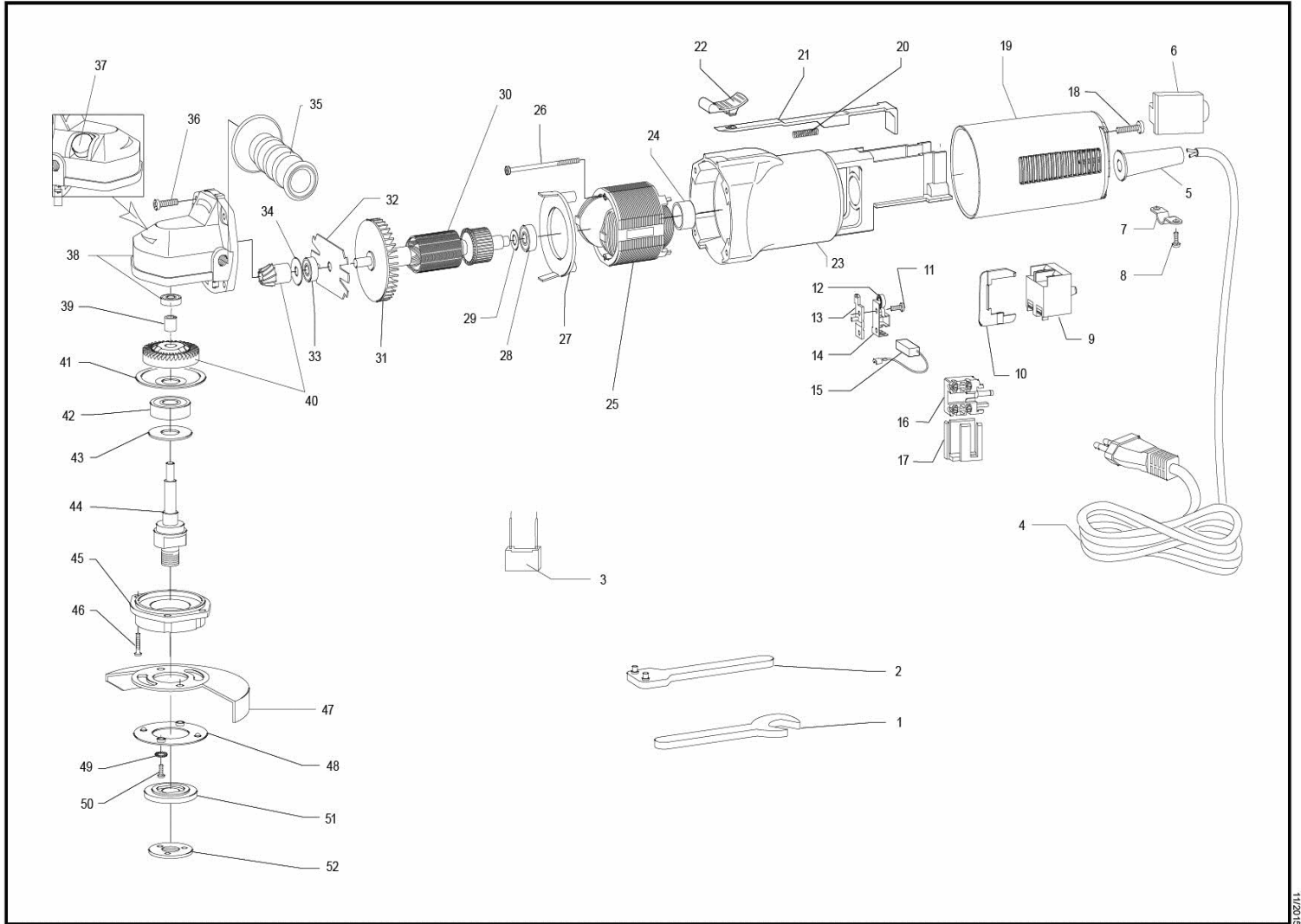


## MINI SMERIGLIATRICE ANGOLARE MINI ANGLE GRINDER

## BA215S - BA225S - BA225D



ID	ITEM	DESCRIPTION
001	83.13	SPANNER mm 17
002	83.91	SPANNER
003	9.1531	CONDENSER
004	9C2X1,5V003FOR	CABLE 2X1,5 (without plug) mt.3,50 with fork
005	42.105	CABLE SLEEVE BA21-BR51
007	442.55	CABLE CLAMP
008	9.660	SCREW 3,9x16 ( 7x5/8") T.C.C.
009	45.210	SWITCH
010	382.247	SWITCH SEPARATOR
011	9.551	SCREW 2,9x13 ( 4x1/2") T.C.C.
012	461.105	SPRING BRUSH HOLDER BA21 BURNISHED
013	462.105	BRUSH HOLDER PLATE
014	46.105	BRUSH HOLDER BA215-LH18ENS
015	471.105/10	10 BRUSHES BLISTER BA215 FOR LOW VOLTAGE
016	450.105	SWITCH
017	391.105	CAGE FOR SWITCH
018	9.660	SCREW 3,9x16 ( 7x5/8") T.C.C.
019	44.247/C	CALOTTA POSTERIORE BA E AR
019	443.247	REAR CAP LOCK
019	44.247/C	CALOTTA POSTERIORE LHR12E con chiusura
020	75.105	SPRING
021	38.247	BEAM SWITCH
022	381.247	RUBBER BUTTON ON/OFF
022	381.247D	COMPLETE BUTTON ON/OFF without clamp
023	31.247	MOTOR BODY
024	268.105	BEARING CAP
025	2.105/042	STATOR (V.42)
025	2.105/048	STATOR (V.48)
025	2.105/072	STATOR (V.72)
025	2.105/080	STATOR (V.80)
025	2.105/110	STATOR (V.110)
026	9.570	SCREW 2,9x60 ( 4x2"3/8)T.C.C.
027	73.105	AIR BULKHEAD
028	9.14/10	BEARING 626ZZ 1MC3EJNS75Q
029	9.318	STEEL WASHER d15 x 6,1 s 0,15
030	1.105/042	ROTOR (V. 42)
030	1.105/072	ROTOR (V. 72)
030	1.105/110	ROTOR (V.110)
031	15.105	FAN 36 BLADES
032	351.105	MOTOR BODY LITTLE COVER
033	9.17/10	BEARING 629 ZZ-C3
034	9.218	STEEL WASHER d20 x 8,1 SP 0,1
035	811.13	HANDLE
036	9.679	SCREW 4,2x25 ( 8x1" ) T.C.C.
038	32.205/C/21	GEAR BOX WITH BUTTON
039	9.60	BUSH DHK 0609
040	50.105	GEAR SET
040	50.106	GEAR SET
041	35.105	FLANGE PLATE BA21-SL41
042	9.99/10	BEARING NSK 6201 DDUUCM D EA3S6
043	9.314	STEEL WASHER d31,9 x 26 s 0,1
044	51.105	SPINDLE SHAFT
045	33.105	FLANGE
046	9.637	SCREW M4 x 16 T.C.C. 8G BURNISHED
047	82.105	GUARD
047	82.114	GUARD



**R.U.P.E.S. spa**  
**Realizzazione Utensili**  
**Pneumatici Elettrici Speciali**  
sede operativa: via Marconi, 3A  
20080 Vermezzo (MI) - Italy  
tel.: ++39.02.946941  
fax.: ++39.02.94941040  
e-mail: info\_rupes@rupes.it

web: www.rupes.com  
cod.fisc. e part. IVA: IT 05094230157  
cap.sociale: euro 2.100.000 int.ver.  
REA: MI-1163819  
Reg. Imprese n. 0509430157  
sede legale: v.le Bianca Maria, 13 - Milano  
REG. RAEE: IT08020000000741  
REG. PILE: IT09060P00000205

ID	ITEM	DESCRIPTION
048	821.105	LOCK DISC FOR PROTECTION GUARD
049	9.331	TOOTHED WASHER
050	9.566	SCREW M5 x 10 T.C.C. BURNISHED 8.8
051	935.91	SUPPORT WHEEL NUT
052	934.91	WHEEL WRENCH NUT